

# Smart imagery

The benefits of having a digital twin of your city

Achim Richarz





## Present recording system: DCR10

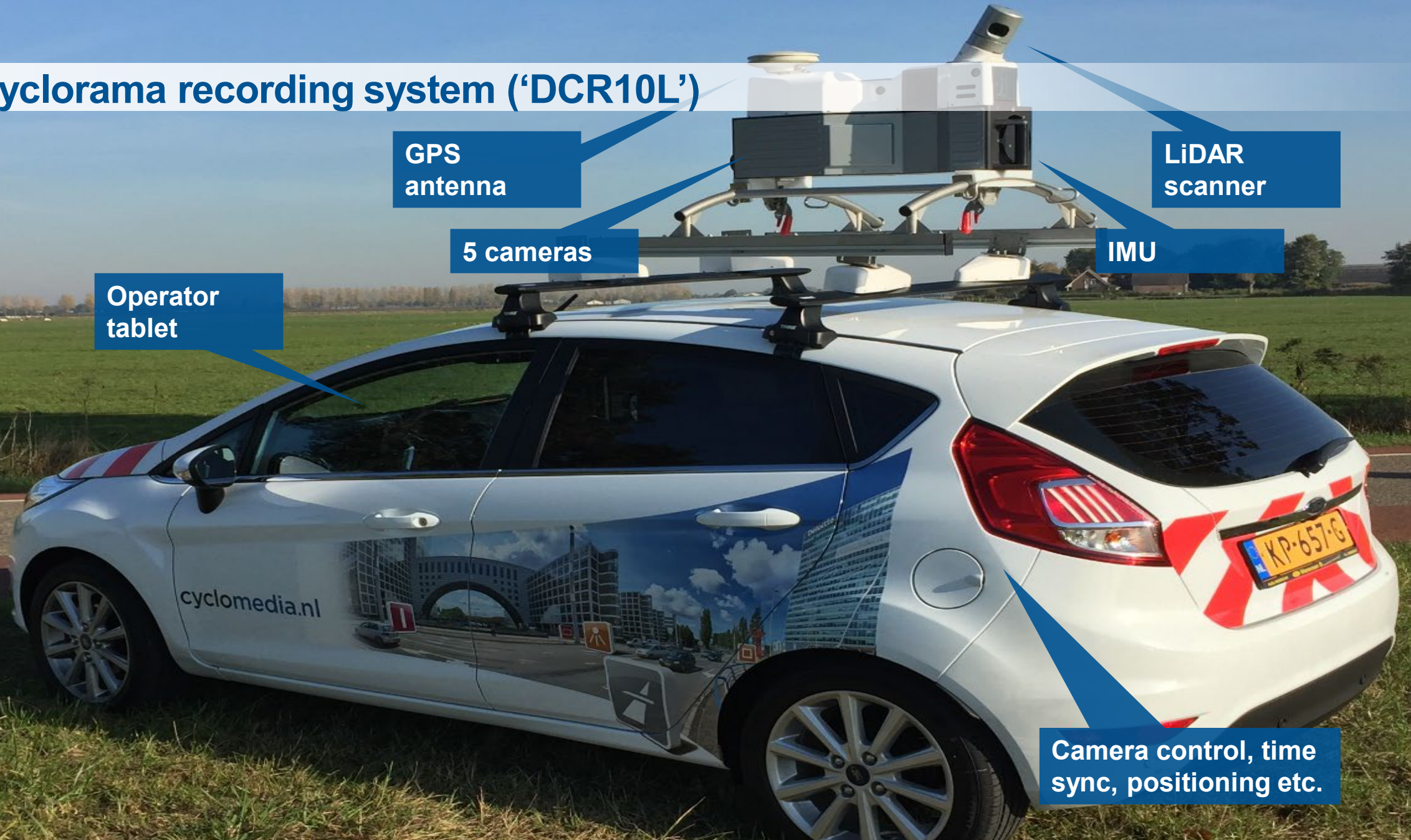








# HD-Cyclorama recording system ('DCR10L')



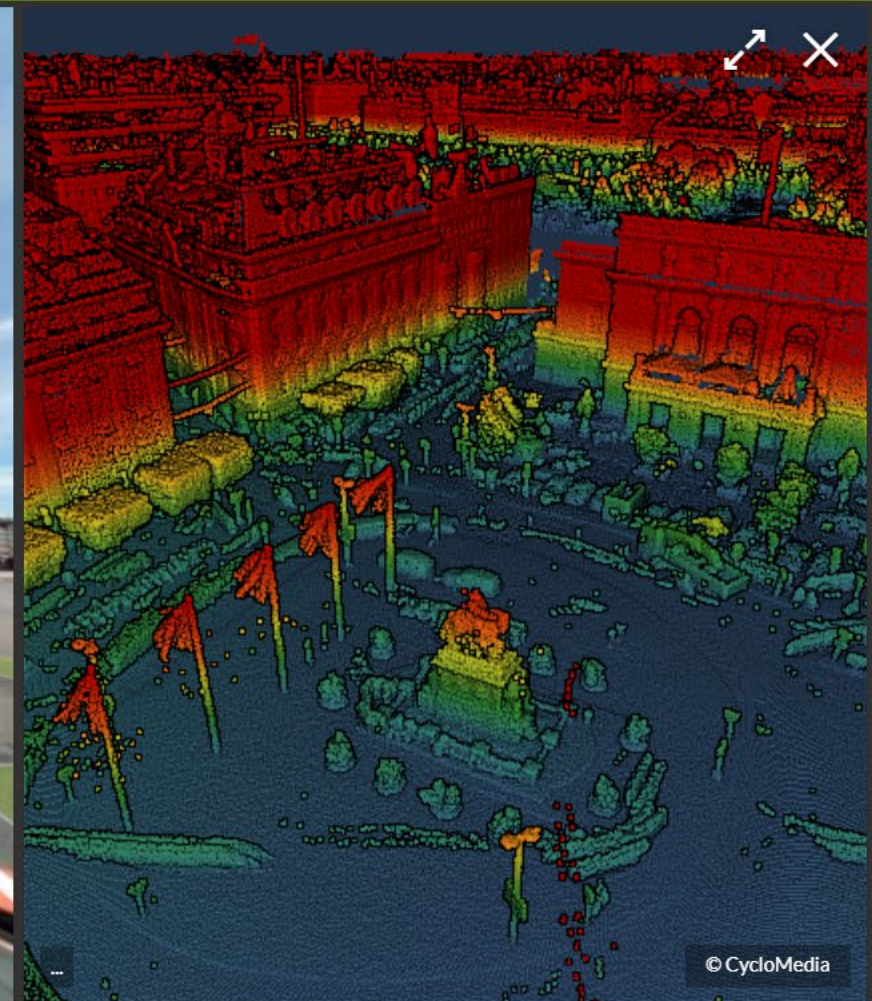
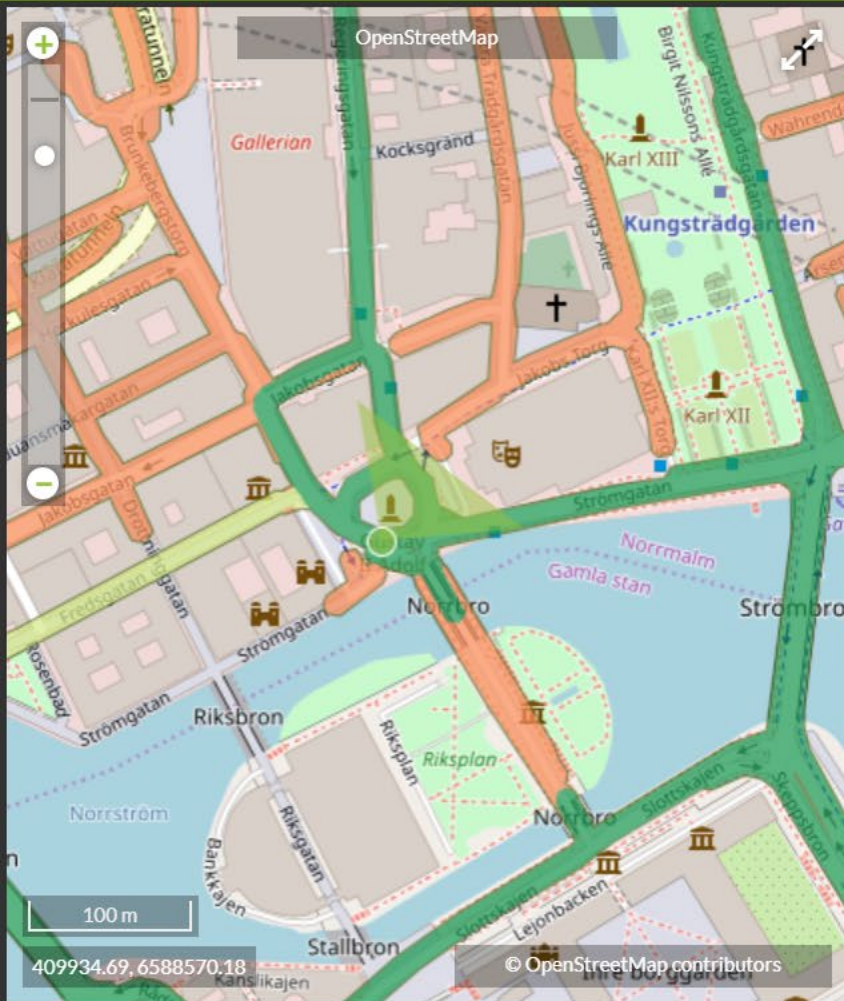




Search



Achim Richarz ▾





# CycloMedia customers engage with solutions in three ways



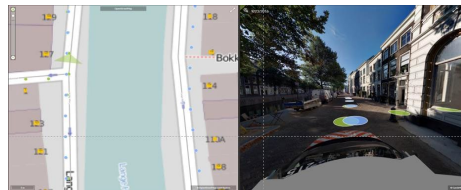
Viewing

Visually search, inspect and compare assets and environments in public space as part of existing business processes



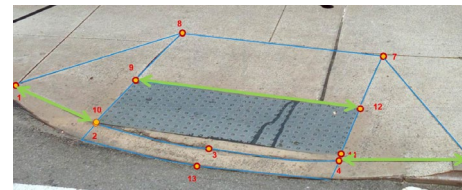
Analyzing

Enabling new digital work flows through visual and geospatial analyses of captured environment



Measuring

Enabling new digital work flows by performing detailed site measurements and assessments

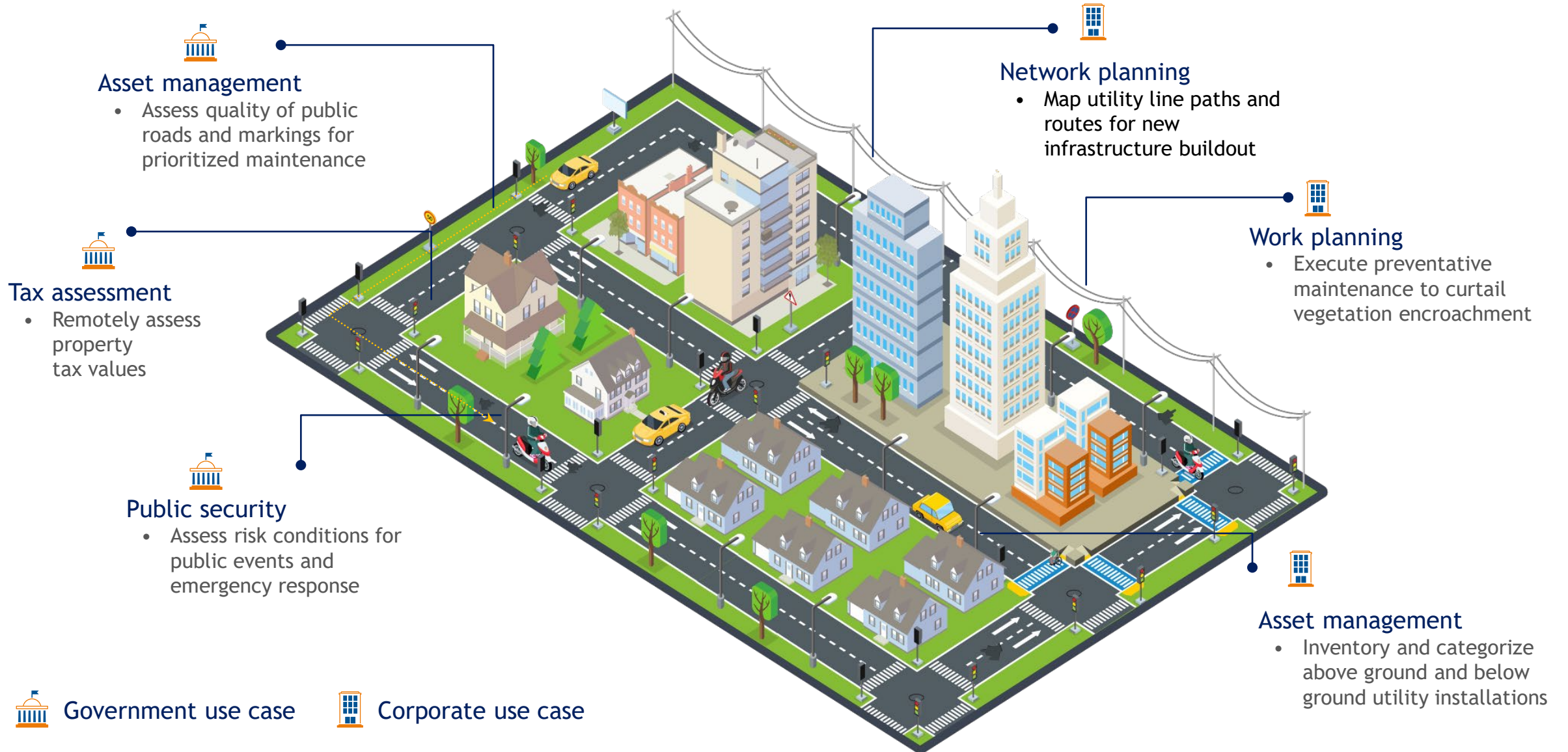


Increasing user sophistication

Manual processes are disrupted as users increase sophistication in their use of data and imagery



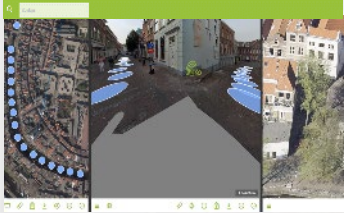
# Creating a digital twin of the city serves a portfolio of use cases





# Smart City and CycloMedia – Creating a digital Twin

## Street Smart



Realistic **3D walk-through** environments



**Proprietary CaaS<sup>(1)</sup> platform** to view, analyse and measure built environments

## Information products



**Geo-referenced object databases** built by automated **object recognition algorithms**



**Automation** of manual processes and **data management**

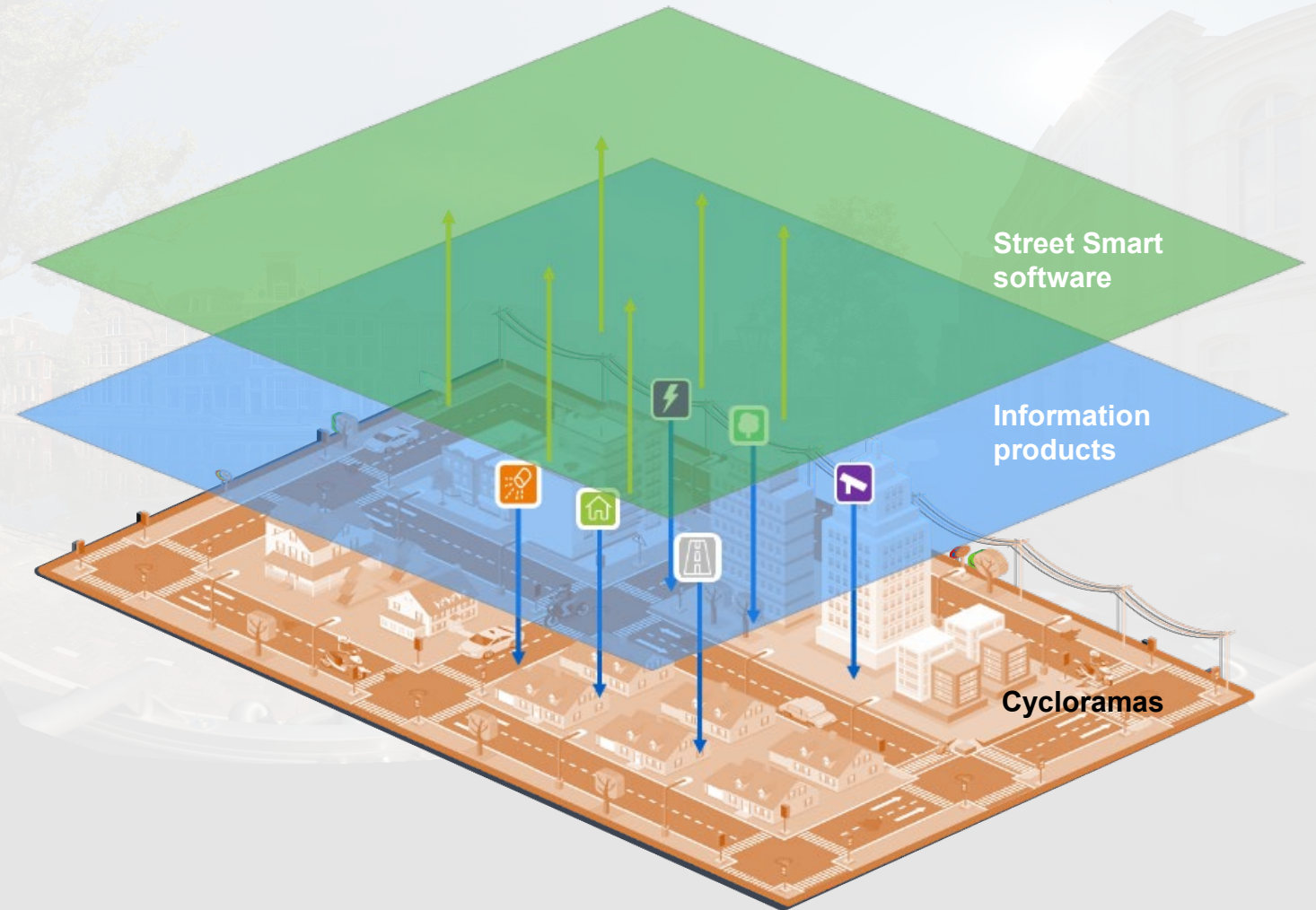
## Cycloramas



**360° panoramic street-level** imagery data (and LiDAR point clouds)

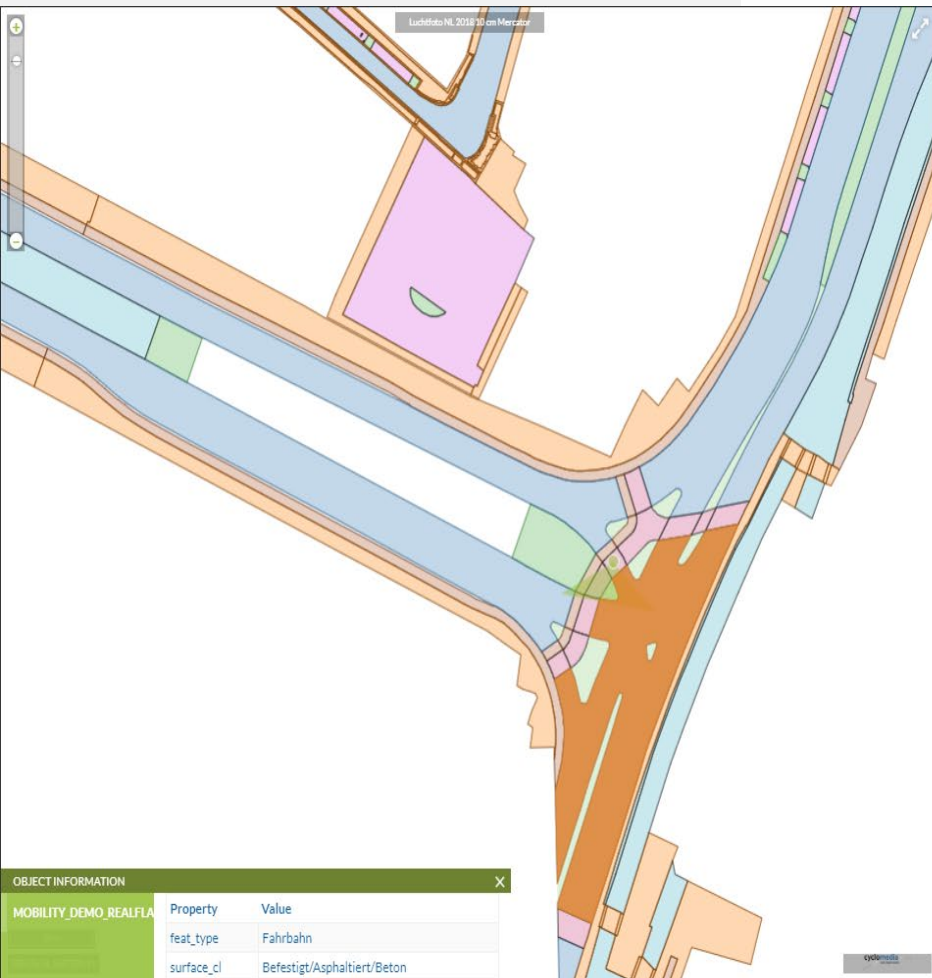


Exceptional degree of **geometric** and **locational accuracy**, at scale





# Area mapping



Priority	Feature Type (Feat_Type)
1	Sidewalk
2	Cycle_path
3	Rail_track
4	Parking
5	Road
6	Green_area
7	Island_without_traffic
8	Pedestrian_area
9	Other



## Contact



Achim Richarz



aricharz@cyclomedia.com



+46 70 787 2303

